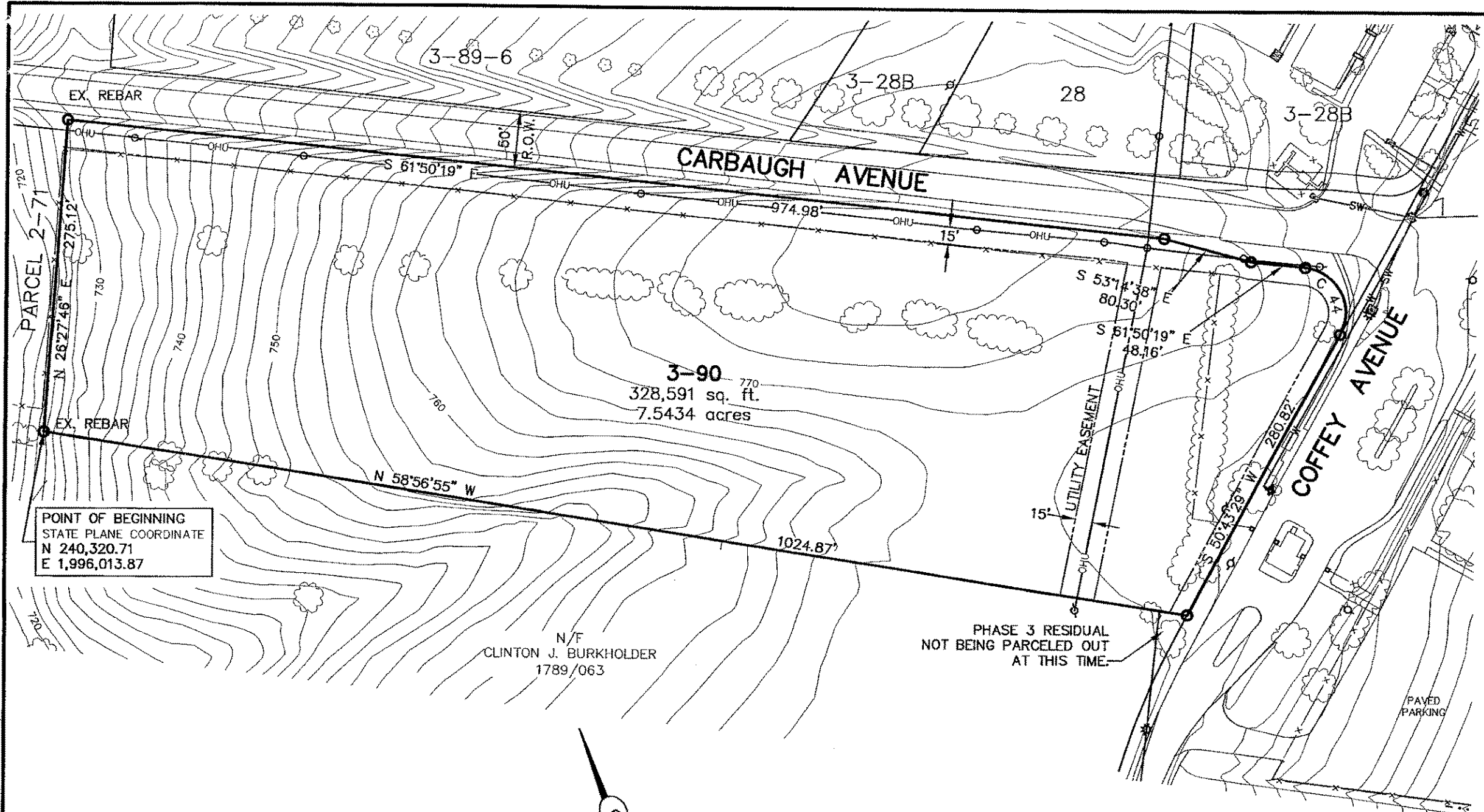


N:\proj\ltd3\148\dwg\5148subd.dwg, LOT 3-90, 10/09/2003 04:20:29 PM, chuck



- NOTES:**
1. THIS SITE IS NOT LOCATED WITHIN AN AGRICULTURAL DISTRICT.
 2. PA LAW REQUIRES THAT ANYONE PLANNING TO UNDERTAKE EXCAVATION OR DEMOLITION WORK ON THIS SITE NOTIFY THE "PA ONE CALL SYSTEM, INC." (1-800-242-1776) NOT LESS THAN THREE (3) OR MORE THAN TEN (10) WORKING DAYS PRIOR TO BEGINNING EXCAVATION OR DEMOLITION WORK.
 3. ANY PARCEL PROPOSED FOR BUILDING IS SUBJECT TO BUILDING SETBACK RESTRICTIONS AS PER THE CURRENT GREENE TOWNSHIP ZONING ORDINANCE.
 4. THE COORDINATES SHOWN ON THIS PLAN ARE BASED ON THE PENNSYLVANIA STATE PLANE COORDINATE SYSTEM, SOUTH ZONE. THE BEARING DATUM IS BASED ON THE STATE PLANE GRID NORTH AND THE DISTANCES ARE ACTUAL GROUND DISTANCES. IN ORDER TO CONVERT THESE DISTANCES TO STATE PLANE DISTANCES, A SCALE FACTOR OF 0.9999556 MUST BE APPLIED.
 5. THE TOPOGRAPHY HEREON SHOWN WAS PROVIDED TO LIDA BY BENATEC ASSOCIATES DATED AUGUST 1994.
 6. THE HORIZONTAL SURVEY DATA SHOWN ON THIS PLAN WAS BASED ON, AND EXPANDED FROM, THE EXISTING DATA FROM THE LIDA PHASE 1 AND PHASE 2 LAND TRANSFER PLANS AND THE "FIGURE 1, LOCATION OF PHASE 3 PARCELS" PREPARED BY WESTON SOLUTIONS DATED JAN. 18, 2001. NO FIELD SURVEY HAS BEEN CONDUCTED BY DENNIS E. BLACK ENGINEERING, INC. AT THIS TIME.
 7. A TEN (10) FOOT DRAINAGE AND UTILITY EASEMENT IS RESERVED ALONG ALL LOT LINES AND THIS LOT IS SUBJECT TO ANY EASEMENTS OR RESERVATIONS THAT MAY BE APPLICABLE FROM ADJOINING PARCELS.
 8. UTILITY LOCATIONS WERE PROVIDED BY THE MENTIONED TOPOGRAPHY SOURCE, AND PHASE 2 LAND TRANSFER PLANS (SOURCES AS NOTED). THESE UTILITIES WERE NOT FIELD LOCATED BY DENNIS E. BLACK ENGINEERING, INC.
 9. THE UTILITIES SHOWN ON THIS PLAN ARE ONLY PROVIDED TO SHOW EASEMENTS AFFECTING THE INDIVIDUAL PARCEL AND ARE NOT INTENDED TO PROVIDE A COMPLETE REPRESENTATION OF ALL UTILITIES IN THE AREA.

POINT OF BEGINNING
STATE PLANE COORDINATE
N 240,320.71
E 1,996,013.87

N/F
CLINTON J. BURKHOLDER
1789/063

PHASE 3 RESIDUAL
NOT BEING PARCELED OUT
AT THIS TIME.

PAVED
PARKING

Vol 288 I Pg 594 Pt 4

**LETTERKENNY INDUSTRIAL DEVELOPMENT AUTHORITY
PHASE 3 LAND TRANSFER PLAN**

SITUATED IN GREENE TOWNSHIP, FRANKLIN COUNTY, PA

DENNIS E. BLACK ENGINEERING, INCORPORATED
ENGINEERING—SURVEYING—PLANNING
2400 PHILADELPHIA AVENUE
CHAMBERSBURG, PA. 17201

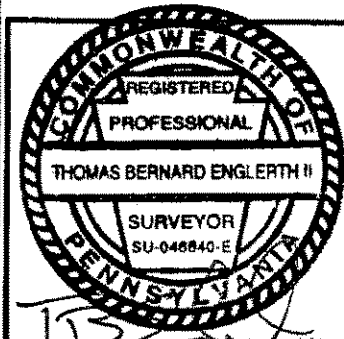
CURVE TABLE

CURVE	RADIUS	LENGTH	TANGENT	CHORD BEARING	CHORD
C 44	40.00'	78.58'	59.93'	S 05°33'25" E	66.54'



(IN FEET)
1 inch = 100 ft.

- LEGEND**
- RRS Railroad Spike
 - Centerline Centerline
 - R.O.W. Right of Way
 - EX. Existing
 - Point unless shown otherwise Point unless shown otherwise
 - Fire Hydrant (F.H.) Fire Hydrant (F.H.)
 - Railroad Tracks Railroad Tracks
 - Right of Way/Easement Line Right of Way/Easement Line
 - Property Line Property Line
 - Contour line Contour line
 - SW Storm Sewer Line
 - FM Sanitary Sewer Force Main
 - SS Sanitary Sewer Line
 - W Water Line
 - G Gas Line
 - Underground Conduit
 - OHU Overhead Utility Line unless labeled underground
 - IWS Industrial Waste Sewer Line



DWN. C.M.A.	CLIENT No. 3366	ORDER No. 5148	SHEET 3 OF 35
CHK. S.W.	DATE 15 Sept. 03	AutoCAD DRAWING REF. NUMBER 5148subd	DRAWING No. 03-85
APP. TBE	SCALE 1"=100'		

THE ORIGINAL DRAWING AND THE INFORMATION SHOWN THEREON ARE THE PROPERTY OF D. E. BLACK ENG., INC. AND SHALL NOT BE DUPLICATED WITHOUT WRITTEN PERMISSION

PARCEL 3-90